

Registration form, continued

Can you come early Friday to help set up?

- Yes
- No

If yes, do you prefer to:

- Set tables
- Decorate and build scenery
- Cook

Can you stay on Saturday to help clean up?

- Yes
- No

PAYMENT INFORMATION

I am contributing \$_____ over and above my registration fee to help with scholarships (*additional is not tax-deductible*).

Return this form, along with your check payable to Grace EPC, to the registration kiosk or mail it to:

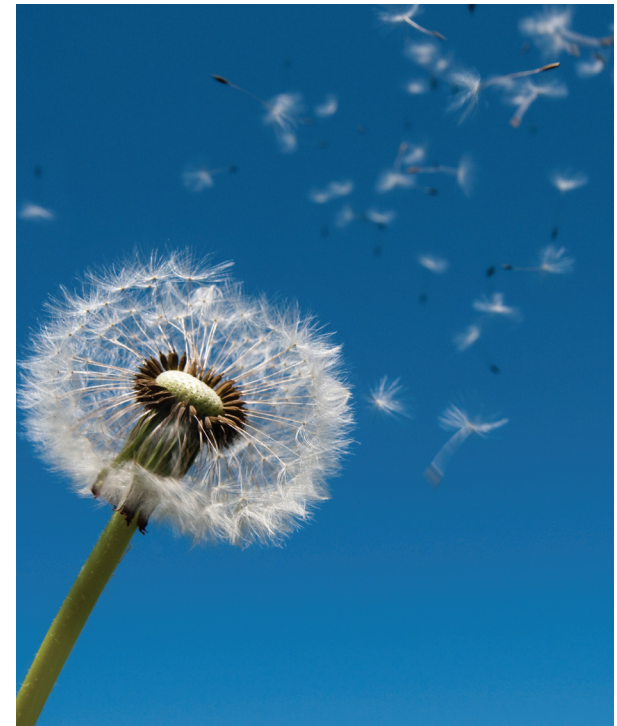
Michelle Beard
124 Florida St.
Lawrence, KS 66044
(785) 832-2492

Women of Grace
GRACE EVANGELICAL PRESBYTERIAN CHURCH
3312 Calvin Drive, Lawrence, KS 66049

Teach us to
NUMBER
our **DAYS**

THAT WE MAY GET A HEART OF WISDOM

PSALM 90:12



Grace EPC
Women's Retreat
March 5-6, 2010

JOIN US

6 p.m. Friday to 3 p.m. Saturday at Grace Evangelical
Presbyterian Church, 3312 Calvin Drive, Lawrence, KS

Intentional LIVING

MAKING OUR
DAYS COUNT

*A message from Katharine Ritter,
Director of Women's Ministries*

Psalm 90:12 says, "Teach us to number our days, so that we may get a heart of wisdom."

Over the past year, the Women of Grace have been reminded, by way of miracles and mourning in our midst, to make the most of our lives, because our days on earth are indeed numbered. And yet while we know that life is short, purposeful living sometimes eludes our grasp in the midst of daily life. Books promise us "effective habits for effective people," professors deliver "last lectures" to inspire us, and movies urge us to "seize the day." But we know from the Scriptures that intentional living was originally God's idea for His people.

And so our 2010 retreat is an opportunity to consider God's wisdom for how to make our days count. Throughout the weekend, we'll worship together and hear practical encouragement from real women of Grace. Plan, too, on times for reflection, conversation around the tables, late-night fun and games, and special meals. Our sessions will be as follows:

- ◆ **Friday night: Knowing God and numbering our days**
- ◆ **Late night options: Gift grab and coffee café**
- ◆ **Saturday morning: Intentional days/practical wisdom**
- ◆ **Saturday afternoon: Where will we go from here?**

New this year is our "in-house, in-town" format. We hope that this will be a comfortable and convenient option for you and that our new format will be a wise use of the financial resources devoted to this ministry endeavor (this year's registration fees are covering the entire cost of the retreat). Please make every effort to join us for this time of fellowship and encouragement.



What you need to know

We hope you'll join us for this enriching weekend of retreat and refreshment! If you have any questions not answered here, please contact Debbie Rask (ksrasks@yahoo.com).

THE COST

Two days: \$40 (\$30 for students); single day: \$25

DEADLINE TO REGISTER

Sunday, Feb. 21, 2010

Unfortunately, we're unable to give refunds, but if, after registering, you find you are unable to attend, please contact Debbie Rask to make your spot available for someone else.

Check-in begins at 6 p.m.
Dinner is served at 6:30 p.m.

WHAT TO BRING

- ◆ A heart open to the blessings that God will give from our times of teaching and fellowship
- ◆ Bible, notebook, pen/pencil, prayer journal
- ◆ A fun gift (\$5 to \$10 value) for a gift exchange

WHAT WILL BE PROVIDED

- ◆ Meals and drinks
- ◆ Great sharing!

ADDITIONAL ITEMS TO BRING

- ◆ Snacks to share on Friday night
- ◆ Table games
- ◆ Mug (styrofoam cups will be provided)

CUT ALONG DOTTED LINE

Women's retreat 2010 registration form

(Please include payment with form)

NAME

ADDRESS

CITY, STATE, ZIP

PHONE

E-MAIL

SPECIAL DIET/ACCOMODATIONS NEEDED

Are you a student?

- Yes
 No

Do you need transportation to and from the church?

- Yes
 No

Continued on reverse